

SERVICE SUPPORT VESSELS DP GEZINA & DP GALYNA



YEAR ROUND PLATFORM ACCESS

DP GEZINA AND DP GALYNA, DP 2 SUPPORT VESSELS WITH SPS CODE AND EQUIPPED WITH AMPELMANN HEAVE COMPENSATED GANGWAYS, HAVE A HIGH FOCUS ON CREW WELFARE, SAFETY AND FUEL EFFICIENCY



WALK TO WORK VESSELS DP GEZINA AND DP GALYNA

In response to the growing renewables market, Chevalier Floatels introduced DP 2 offshore support vessels DP Gezina and DP Galyna, the world's first state-of-the-art onsite accommodation and walk-to-work vessels. The vessels are the economic solution to support installation, maintenance, upgrading and life extension for offshore wind and oil and gas platforms and (aging) production facilities, from 30 miles offshore. Staying on site implicates reduction of sailing time, increase of actual production hours with time and facilities for the technicians to rest, recreate and be ready for the next day.

AMPELMANN GANGWAY

- ▶ Permanently installed Ampelmann heave compensated gangway XL.
- ▶ Located in the center of the ship.
- ▶ Connecting to platforms over both sides of the vessel, 19 m above the waterline on Gezina and 23 m on Galyna.
- ▶ Operational up to 3.20 m waves.



FUEL CONSUMPTION AND EMISSIONS

- ▶ Low fuel consumption of about 3M/T MGO per day in operations resulting in low CO₂ emissions.
- ▶ Autonomy 30 days.

VESSEL EQUIPMENT

- ▶ Roll Royce active fin stabilizers.
- ▶ Crew boat landing to connect with crew vessels.
- ▶ Heave compensated crane of 2 t @ 10 m and 1 t @ 20 m, placed 10 m above waterline.
- ▶ Work deck and covered storage deck for two 20 ft and five 10 ft containers.
- ▶ Watermakers and sewage treatment system.

DP 2 CAPABILITIES

- ▶ Strong DP 2 position keeping by means of 4 azimuth thrusters.
- ▶ High redundancy with ERN of 99, 98, 92 and 91.
- ▶ Fast transit on DP up to 6 knots.

ACCOMMODATION

- ▶ 38 Luxury cabins with bathrooms, for client use including TV and entertainment system.
- ▶ SPS code for 60 POB including 40 client guests.
- ▶ SPS exemption for 75 including 55 client guests.
- ▶ 3 Offices with 8 desks with hard wired internet connection.
- ▶ Low noise level.
- ▶ Large restaurant, dayroom, meeting room and smoking room.
- ▶ Large fitness area, professional hospital and laundry.
- ▶ Large change room with boots and clothes dryers.
- ▶ High catering standard.
- ▶ Professional service oriented crew.
- ▶ Wifi throughout the ship.

WORK EXPERIENCE

DP GEZINA

Van Oord/Vattenfall, Dan Tysk Wind Farm

Accommodation and support for cable installation

Areva, Borkum West Windfarm

Accommodation and installation support

Saipem/BG Gas, Mediterranean Sea

Platform upgrade

Perenco UK, Lehman 27A

Accommodation support, platform upgrade and crew transfer

VBMS, Buitendiek Windfarm

Accommodation and cable connection support

Oranje Nassau Energy, North Sea

Accommodation and gas platform maintenance

Wintershall, North Sea

Gas platform commissioning

Alstom, Baltic Sea

Accommodation and converter station commissioning TenneT

Jan de Nul, Dong Energy Burbow Bank

Cable pull in, termination and commissioning

Taq Oil

Crew transfer

DP GALYNA

Siemens/SSE Greater Gabbard Offshore Wind Solutions/

Ocean Breeze, Bard 1 Windfarm

Accommodation and maintenance support

Forewind Ocean Breeze, Doggersbank, Met mast

Accommodation and maintenance support, several projects

Rotos 360/Ocean Breeze, Bard 1 Windfarm

Accommodation and maintenance support

Oranje Nassau Energy, North Sea

Accommodation and gas platform commissioning and maintenance projects

Wintershall, North Sea

Accommodation and gas platform commissioning

Ballast Nedam, Butendiek windfarm

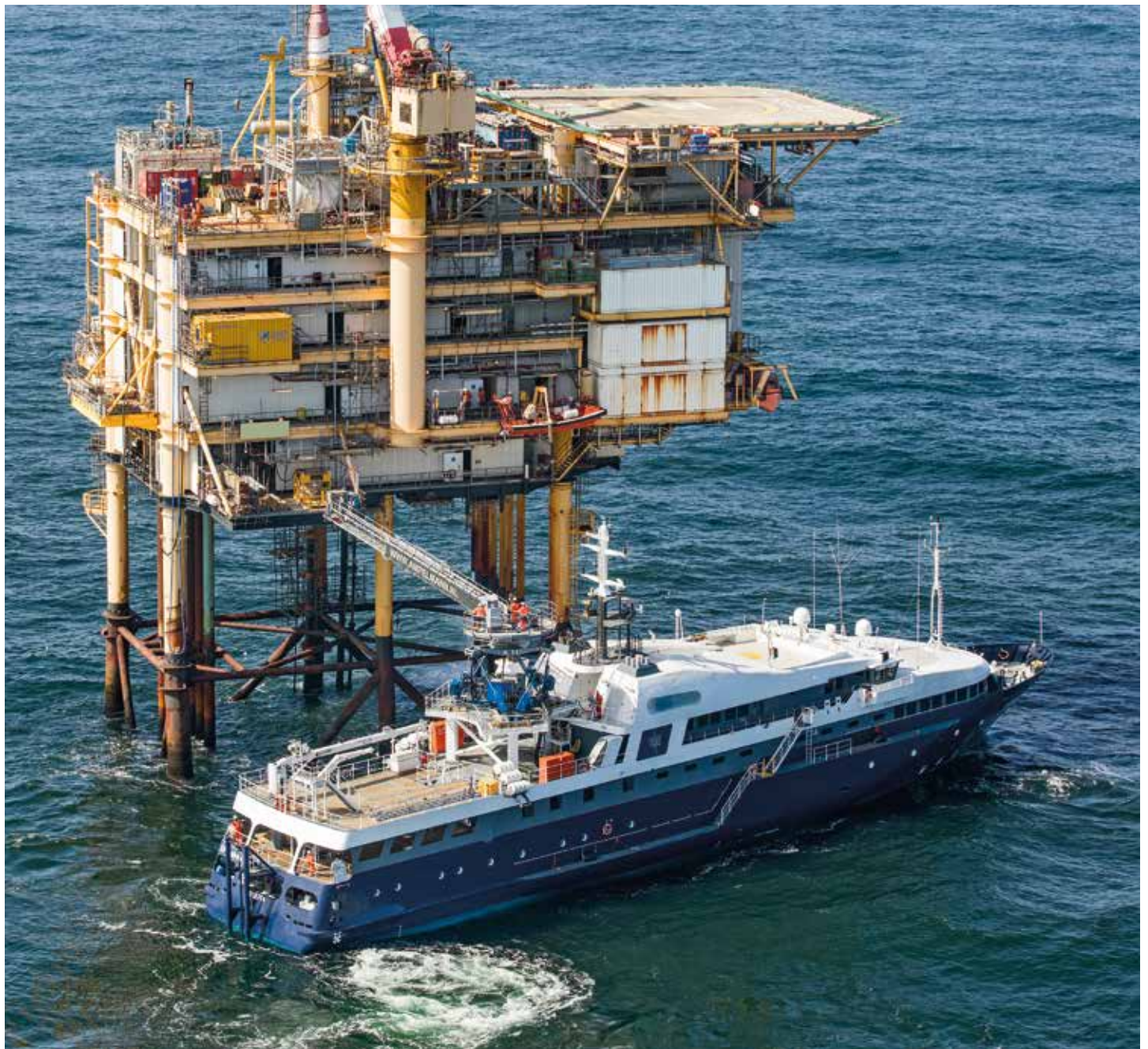
Accommodation and painting campaign

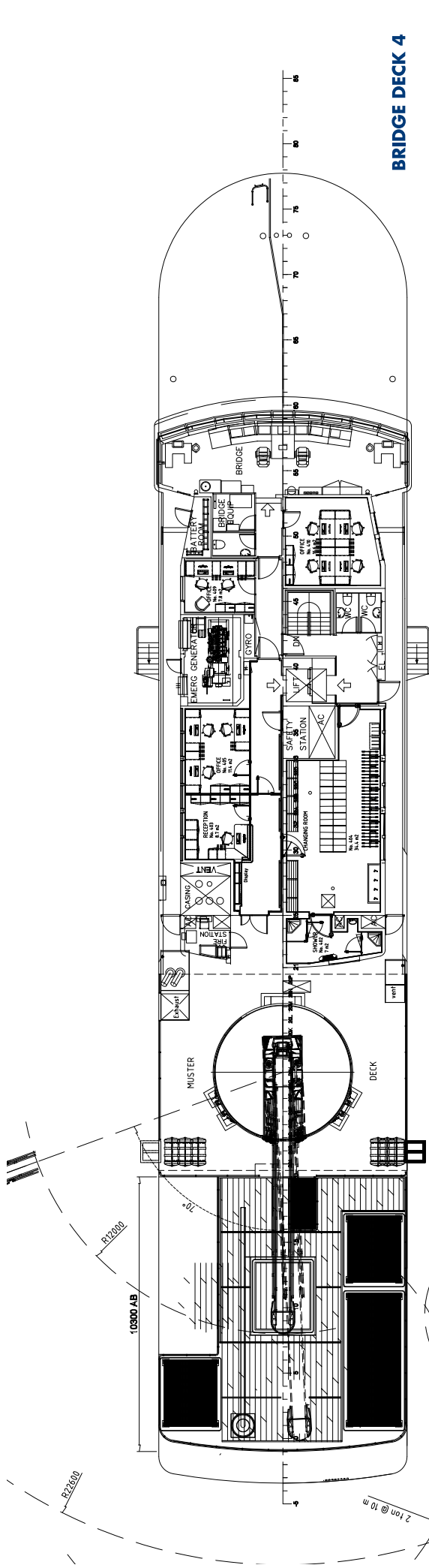
Tullow Oil/Petrofac, Ketch Platform and Schooner Platform

Maintenance and inspection

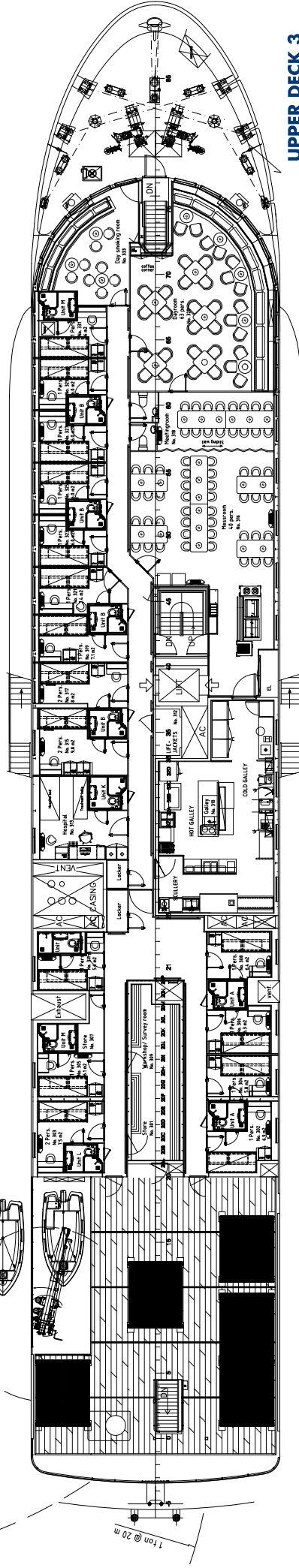
TenneT, Hellwin Alpha, Hellwin Beta

Platform cable connection

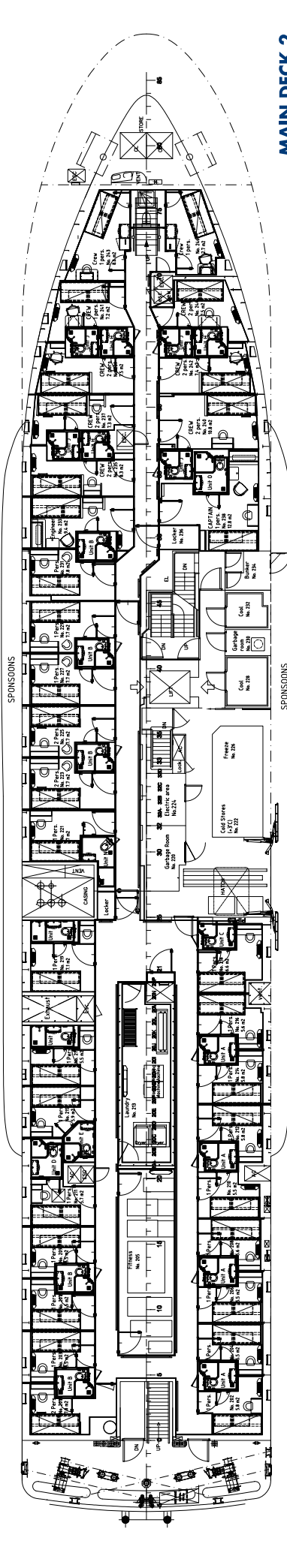




BRIDGE DECK 4



UPPER DECK 3



MAIN DECK 2

	DP GEZINA	DP GALYNA
Year built	2007	2008
Major conversions	2013/2016	2013/2016
Imo No	9295103	9295490
Call sign	9HA3317	9HA3328
Flag	Malta	Malta
Class	LR100A1, Service Support Vessel *IWS LR LMC, UMS, DP(AA)	

DIMENSIONS

Length overall	70.10 m	Beam moulded	13.40 m
Moulded depth	4.70 m	Operating draft	3.10 m
Free deck space	±250 m ²	Air draft	21.43 m
Displacement	1359 tons	Gross tonnage	1831 tons

MACHINERY

Main diesel generators	3 x 640 kW, 2 x 688 kW
Emergency generator	1 x 220 kW
Retractable fin stabilizers	2 x Rolls Royce

PROPULSION

Stern azimuth thrusters	2 x 600 kW
Bow retractable azimuth thrusters	2 x 400 kW
Bow tunnel thruster	1 x 300 kW

PERFORMANCE

Speed	12.5 Knots
Type of Fuel	Marine gas oil
Fuel consumption	Between 2.5 and 3.5 m ³ /day
	In transit 260l/hr
	At DP 200 l/hr
	At anchor/port 50 l/hr
Autonomy	30 days

ACCOMMODATION

All areas fully airconditioned	
Total beds	70
Client beds	50
Client offices	3 with 8 desks, phone and internet
Hospital	IMO compliant
Change room	Including boots and coverall dryers
Restaurant	Seating 40 incl. separate meeting room
Catering	Hot and cold buffet counter. (24 hrs)
Day room	Seating 63, coffee corner, cinema TV
Smoking room	Seating 12

GANGWAY

Type	Ampelmann A-type XL, heave compensated
Location	DP Gezina: mid center, 7.5 m above waterline DP Galyna: mid center, 11 m above waterline
Gangway length	22 m
Max reach	DP Gezina: 19.5 m above waterline DP Galyna: 23 m above waterline

DP 2 EQUIPMENT

Praxis untis with 26" screens integrated in wing consoles
 3 x Gyro compass
 3 x Wind sensors (2 windsensors used in DP system)
 3 x MRU
 3 x DGPS (2x DGPS used in DP system)
 1 x CyScan

DECK EQUIPMENT

Deck crane Telescopic boom, heave compensated
 2 t @ 10m, 1 t @ 20m
 MOB boat with man riding crane 2.2 tons
 Liferafts according to class regulations

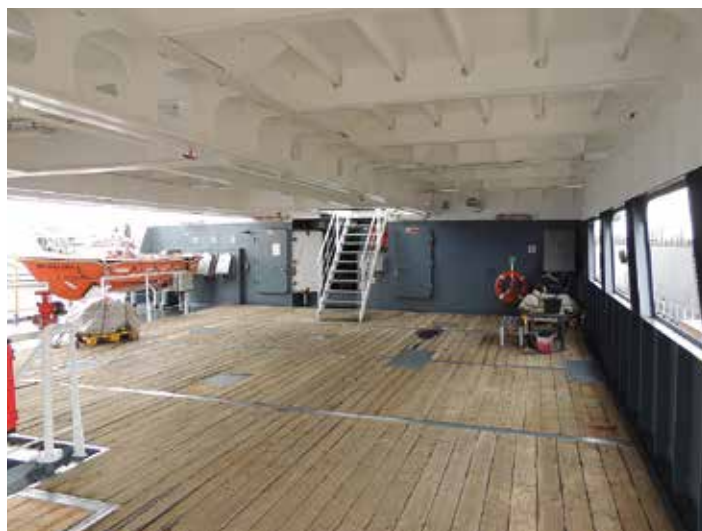
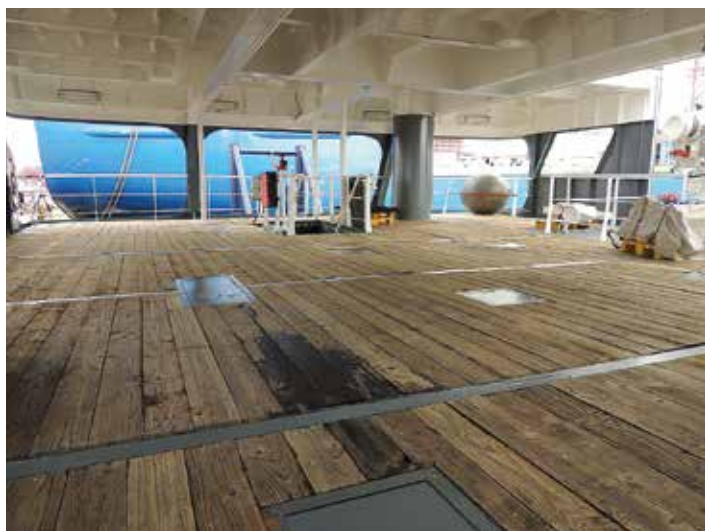
RADIO & NAVIGATION EQUIPMENT

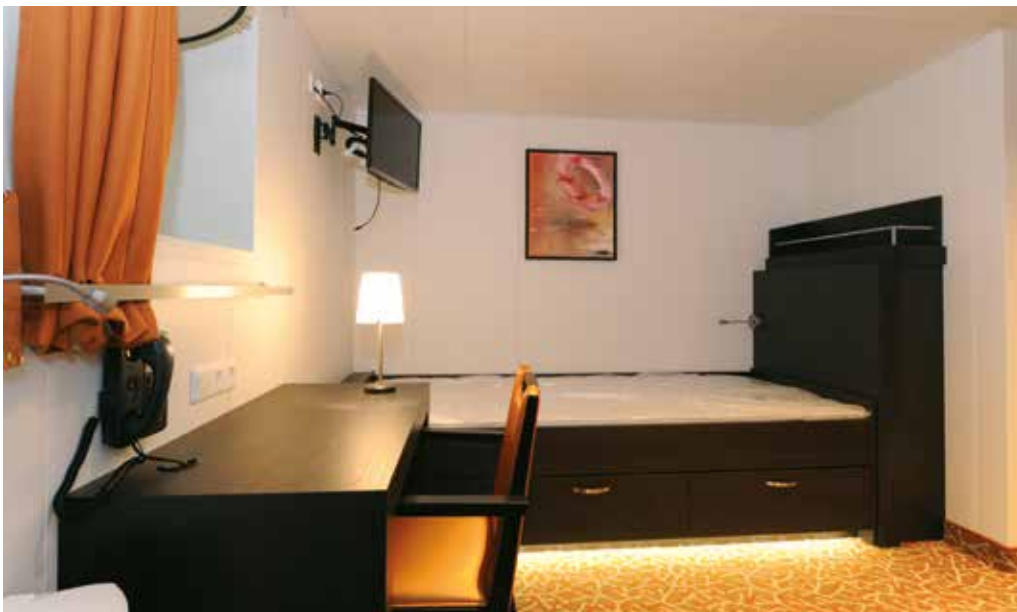
GMDSS radio equipment Area 3
 SAM Electronic Line integrated bridge (3 x) consoles with automations and VMS / PMS
 2 x Inmarsat C terminals
 1 x MF / HF DSC radio telephone
 2 x VHF DSC radio telephone
 1 x SSC transceiver 6 channel DSC
 1 x X-band radar with 21" display
 1 x S-band radar with 21" display
 2 x ECDIS display 21" (electronic charts)
 3 x VHF portable radio's
 1 x Magnetic compass
 1 x Echo sounder
 1 x PA / talk back system
 Local area network (LAN) connected.
 Satellite TV / Entertainment system.
 2 x Autopilot.

AUXILIARY EQUIPMENT

Watermakers 2 x Eide Marine 16 m³ p/day each
 Sewage treatment 1 x Plant Evac marine sewage treatment
 Orca-III-200: 20 m³

All details are believed to be correct and subject to reconfirmation.





Chevalier Floatels has taken great care to offer your personnel - our guests - the comfort they deserve when working at sea. Everything, from stabilizers dampening the ships movements, to fresh fruit at breakfast, is done to make the stay onboard of your workforce more enjoyable. DP Galyna and DP Gezina are fully airconditioned, allowing your personnel to work under tropical or even subarctic conditions.





Chevalier Floatels BV

Doddendaal Estate, Kootwijkerdijk 2, 3774 JT Kootwijkerbroek, The Netherlands, T +31(0)342 441 404, info@cfbv.com, www.cfbv.com