

Floatel Sans Vitesse



MUCH MORE THAN JUST ACCOMMODATION



Our floating hotel Sans Vitesse is designed and built for personnel in the wind, oil, gas and construction industry and for other temporary temporary projects.

Keeping within budgets is essential in large scale projects. Our floatels can be moored close to the working site - without much infrastructure construction - thus saving on travelling time back and forth to the site. After completion of the project, the floatel sails off with minimum impact on the environment.

Good engineers are hard to find. Therefore comfort on board is very important. Ensuring their wellbeing also keeps their productivity maximized and reduces safety risks. With that in mind we have

developed this concept. Sans Vitesse has been built to a very high standard and this makes the vessel perfectly fitted for management staff or top engineers. All cabins have internet, tv and en suite bathrooms. The hotel features a large restaurant, a spacious recreation room, a gym and a laundry. A large galley with quality catering makes sure our guests stay well cared for.

Floatel Sans Vitesse can be moored in any port.

Last but not least, our experienced and well-trained crew understands that it is not only their task to make the stay on board safe, but it is also their job to make Sans Vitesse a home away from home.



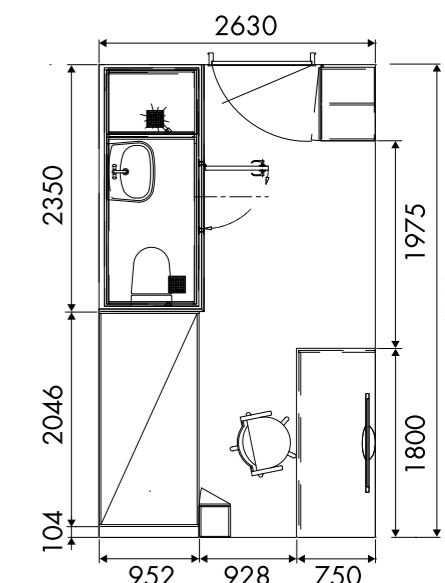
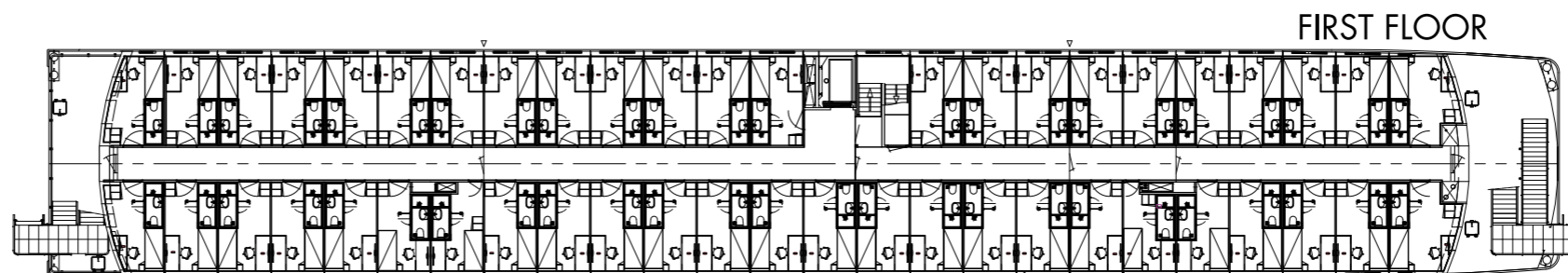
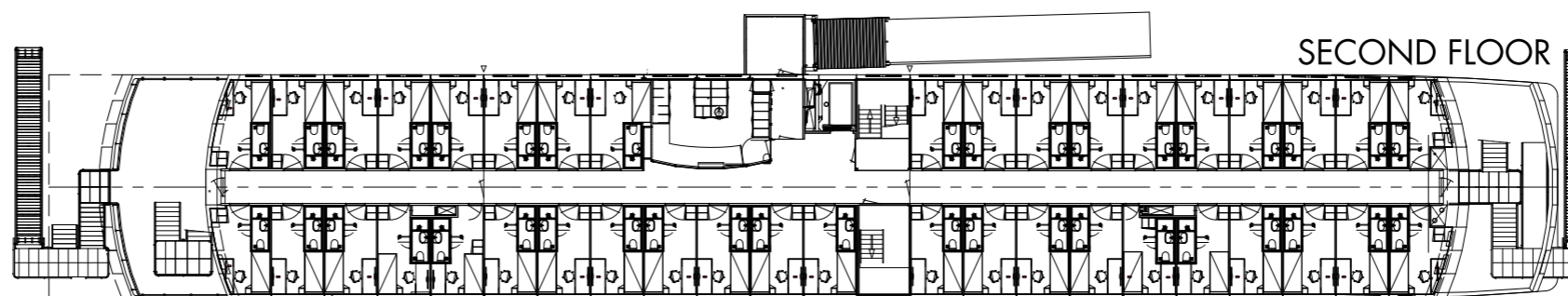
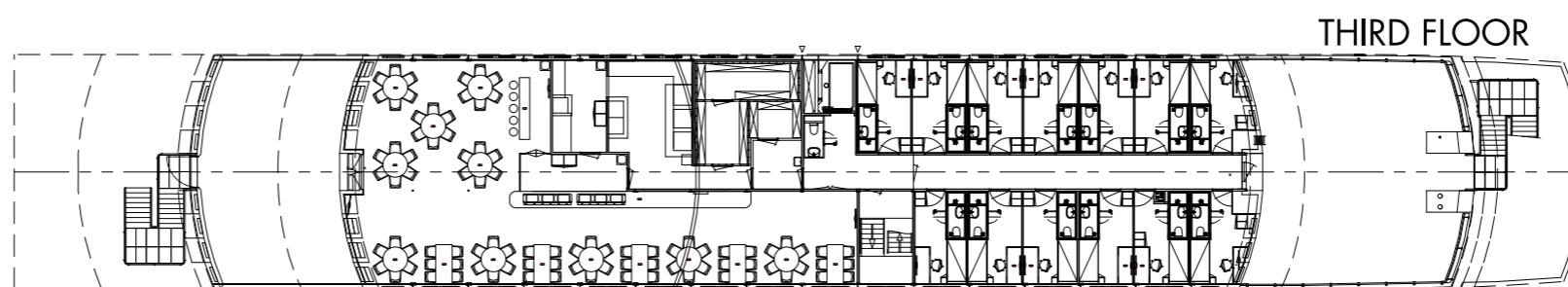
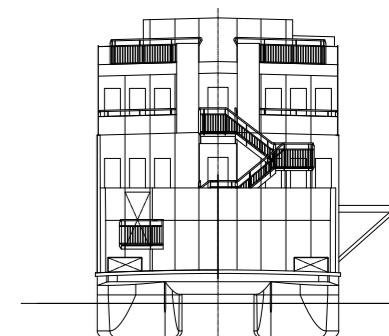
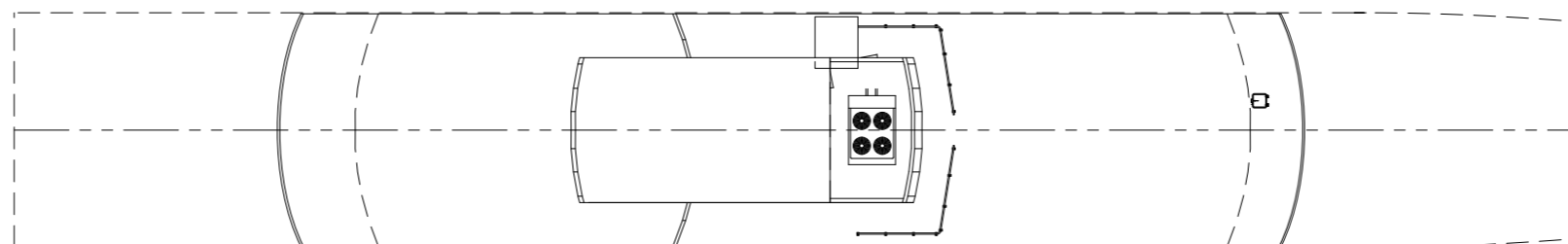
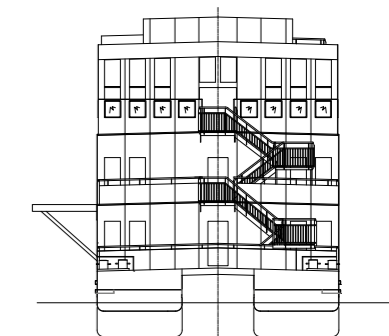
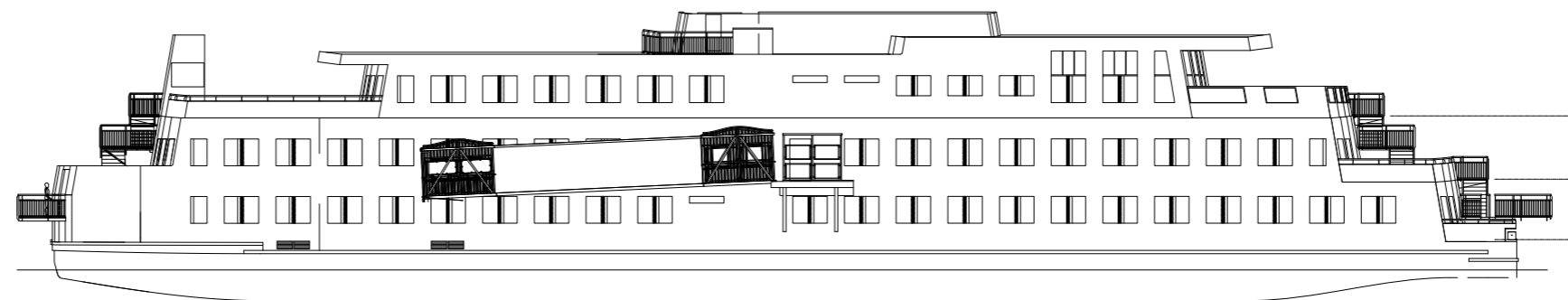
FLOATEL SANS VITESSE

MUCH MORE THAN JUST ACCOMMODATION



101 CABINS WITH EN SUITE BATHROOMS

Built	2004
Flag	Dutch
LOA	76.50 m
Beam	13.20 m
Draft	1.80 m
Airdraft	13.20 m
Class	Germanischer Lloyd \neq 100 A5 I Ponton
Displacement	898.80 tons
Power	220/380 V shore connection by means of pole construction on shore; can also be used by very high water levels. 24 V battery for starting the generator 220 V for domestic equipment 380 V for power tools
Emergency generator	60 kVA 230/400 V Wilson generator driven by John Deere 4 cylinder diesel in a sound proof box type L03P60-COK, May 2009
Heating	2 x automatic Rehema boiler (oil heated) with Weishaupt electric 72-330 kW burner and Flexcon expansion cask. Additional fancoil units in all rooms
Airco	Nova Klima 400 V units in deck below and extra airconditioning technical spaces
Sanitary	2 x Nibe 230/4000 V boiler 500 l 3 x Grunfoss electric circulation pump connected to waste and slob tanks for shore delivery. 2 x Victor Pumps 380 V driven by a waste/slob pump S80 GC 31T
Gangways	3
Lift	Lödige elevator total 13 people, accessible from all deck levels
Tanks	Water ballast in aft 10 m ³ ; Fuel aft 28 m ³ and in front 56 m ³ (detached tanks). Waste water amidships SB side 74 m ³ and Port side 111 m ³ connected by 2 cross over pipes
Accommodation	101 cabins with en suite bathrooms
Restaurant	1 with total seating capacity 60 persons
Bar area	Full bar and a combination of refrigerator and beer tap with work sink and hand wash basin
Reception area	With fire alarm panel and CCTV monitors
Laundry	4 Electrolux w55h washing machines 3 Electrolux T5130 tumble dryers
Galley	1 Electrolux IB4 2314 ironing machine S.s. panelling and fully furnished with 1 Electrolux Thermaline hot unit 1 Electrolux Thermaline frier 1 Electrolux Thermaline hob 2 Electrolux Air-o-Steam units 1 'Gram' K400 RE H DL L2 6N fridge 1 'Gram' K400 RE H L2 6N freezer 1 Electrolux kettle unit 1 Electrolux bratt pan 2 S.s. extract fan & filter units
Cold and dry stores	1 Walk-in large freezer/refrigerator
Dishwashing area	S.s. panelling with rack conveyor dishwasher
Servicing counter	Full service counter in restaurant with 1 Bain-marie hot 1 Bain-marie cold 1 Mini display freezer



All details are believed to be correct and subject to reconfirmation.