

Floatel Kalmar



Our floating hotel Kalmar is designed and built for personnel in the wind, oil, gas and construction industry and for other temporary projects.

Keeping within budgets is essential in large scale projects. Our floatels can be moored close to the working site - without much infrastructure construction - thus saving on travelling time back and forth to the site. After completion of the project, the floatel sails off with minimum impact on the environment.

Good engineers are hard to find. Therefore comfort on board is very important. Ensuring their wellbeing also keeps their productivity maximized and reduces safety risks. With that in mind we have

developed this concept and Kalmar has been built to a high standard. All cabins have internet, tv and connected bathrooms. The hotel features a large restaurant, a bar, several recreation rooms, a gym and a laundry. A large galley with quality catering makes sure our guests stay well cared for.

If needed, rooms can be easily upgraded to double occupancy. With 220 cabins, Kalmar is perfectly fitted for large scale projects and can be moored in any port.

Last but not least, our experienced and well-trained crew understands that it is not only their task to make the stay on board safe, but it is also their job to make Kalmar a home away from home.

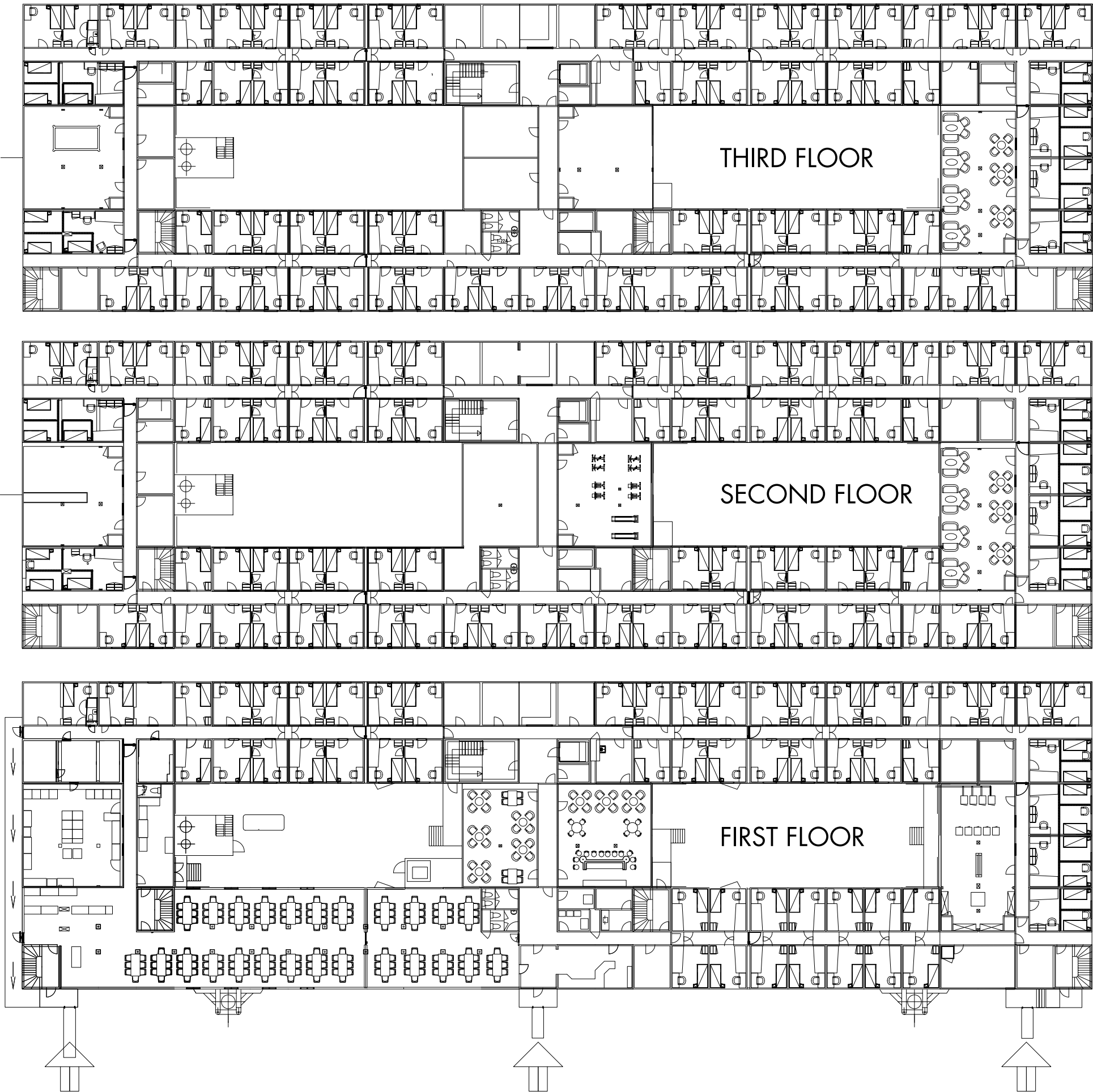


MUCH MORE THAN JUST ACCOMMODATION

MUCH MORE THAN JUST ACCOMMODATION

220 CABINS

Built	1993. Major conversion in 2004 and 2013
Flag	Belize
LOA	94.10 m
Beam	26.20 m
Draft	1.50 m
Airdraft	18.60 m
Classification	Lloyd Registration Pontoon
Gross tonnage	8448
Power	220/380 V shore connection
Emergency generator	Cummins Emergency Generator, 380v, 182 kw, 50 Hz
Heating	Electrical heaters
Fresh water tank	25.000 l with pressure pumps for shore connection
Sanitary	Oil fired hot water boiler UV filter with 12 UV lamps, serial connected with a capacity of 1000 l/min
Gangway	3 X 10 m gangway with turntable and wheels
CCTV	On entrances and in the bar area
Tanks	Fuel storage 238 m³ Sewage holding tank 7.5 m³
Fire fighting	Fire alarm system in accordance with strictest European regulations. Optional sprinkler system throughout the accommodation
Lift	Goods Lift
Accommodation	220 Cabins with 150 wet modules including shower, toilet and sink for client use
Restaurants	2, with total seating capacity of 200 persons
Bar area	Full bar with washbasins and combination of refrigerator and beer tap with work sink and hand wash basin
Recreation areas	8 Large recreation rooms with furniture
Fitness area	(unfurnished)
Offices	9
Reception area	Large reception area with fire alarm panels and CCTV monitors
Laundry	5 Electrolux W555H washing mashines, 4 Electrolux T5130 dryers, 1 Ironing machine IB42316
Galley	Full galley with stainless steel panels and fully furnished including 2 Rational steamers 4 Stainless steel refrigerators 700 l 4 Stainless steel freezers 700 l 1 Hot air oven Trapezium hood 150 l Kettle Grill plate 2 Fryers Tilt casserole 2 Grilling plates Mechanical grease trap
Cold and dry stores	1 Walk in large freezer/refrigerator 1 Walk in refrigerator 2 Dry stores
Dishwashing area	With stainless steel panelling Rack corveyor dishwasher
Serving counter	Full self-service counter in restaurant with 2 bain-marie's hot 1 bain-marie cold sealed bar and water connections



All details are believed to be correct and subject to reconfirmation.